

Life Is On

Schneider
Electric

The Schneider Electric Easy UPS 3L, part of the Easy UPS 3 phase range, is an easy-to-configure, easy-to-use, and easy-to-service 250-600 kVA (400 V) 3 phase UPS that delivers high availability and predictability to medium and large commercial buildings and light industrial applications

Continuity made easy with optimized

Typical applications

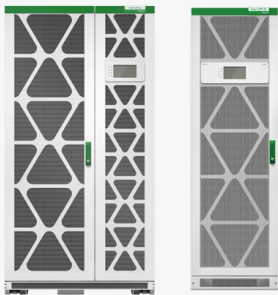
- Commercial buildings
- Manufacturing facilities
- Telecommunication
- Healthcare
- Transportation

COMPACT DESIGN AND OPTIMIZED

- ✓ Compact and lightweight form factor
- ✓ Up to 96% efficiency in double conversion mode
- ✓ 1+1 redundant UPSs can share a common battery bank, reducing battery costs
- ✓ Only pay for the options you need with upgrade kits to enhance the resilience of the UPS

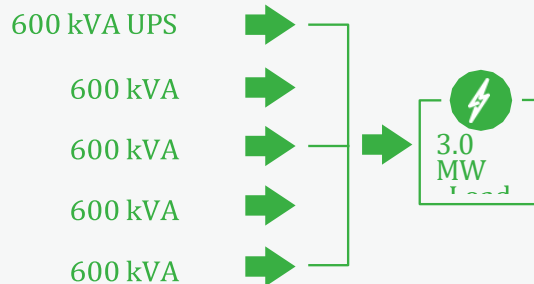
Achieve high availability and resiliency with fault tolerant design and flexible redundancy schemes that support your ideal system architecture

Fault-tolerant design



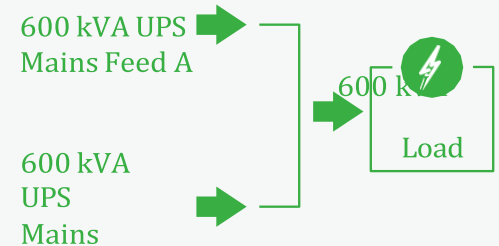
The design is a fault-tolerant architecture. In case a power block becomes inoperable, the load will continue to be supported by the remaining power blocks, provided that the load is below the capacity of the functional power blocks in the system.

Increased capacity with parallel installation



You can install up to 5 UPSs in parallel for capacity.

Higher resilience with N+N isolated bus installation



You can increase availability by installing two isolated busses (UPSs) to receive power from two independent power sources. The UPSs are synchronized automatically, making installation and set-up easy and resilient.

OPTIONS



Classic battery cabinets

Empty auxiliary cabinet

Battery breaker box

Maintenance bypass panel

Accessories

- Network card
- Parallel communication kit
- Load Bus Synchronization (LBS) Kit
- Cold start kit
- Battery breaker kit
- Bottom cable entry cabinet
-

Easy to install and start up

- Streamlined installation with standard top cable entry
- Smart Test mode optimizes site acceptance testing costs, saves time, and ensures high load protection by validating the UPS performance before you connect your load, without requiring a load bank
- Aesthetic design blends well into your installation environment
- Easy on-site start-up with Schneider Electric Field Service Representatives

Easy to configure and operate

- ✓ Easy to configure with the user-friendly 7-inch touchscreen display interface
- ✓ With the optional network card, you can Monitor UPS status remotely through a web interface Monitor and manage the UPS status and performance through Eco Struxure IT's cloud-base and on-premise software suites, bringing you peace of mind

Easy to maintain and service

- ✓ Quickly and easily replace the dust filter, conveniently located behind the front door
- ✓ Schneider Electric service team makes service easy and improves uptime with proper maintenance of your UPS and batteries

Technical specifications

Rated Power (kVA/kW)*	250 kVA/ 250 kW	300 kVA / 300 kW	400 kVA/ 400 kW	500 kVA/ 500 kW	600 kVA/ 600 kW
Input					
Input voltage (V)	380/400/415 V (Three-phase + Neutral + PE)				
Frequency (Hz)	40-70 Hz				
Input power factor	>0.99				
THDI	<3%				
Input voltage range	323 – 477V				
Dual mains input	Yes (default: single mains input)				
Output					
Parallel	Up to 5 UPSs for capacity (or 5 + 1 for redundancy)				
Nominal output voltage (V)	380/400/415 V				
Efficiency: Double conversion mode	Up to 96%				
ECO mode	99%				
Overload capacity in normal operation	150% for 1 minute, 125% for 10 minutes, 105% continuous				
Output voltage tolerance	+/-1%				
Load Power Factor compatibility	From 0.5 leading to 0.5 lagging				
Communication and management					
Communication interface	RS485, dry contacts, Ethernet (SNMP, Modbus, TCP/IP)				
Control panel	7-inch touchscreen LCD, status, and display console				
Weights and dimensions					
UPS, unpackaged/dimensions (H × W × D mm)	1970 x 600 x 850 mm			1970 x 1000 x 850 mm	
UPS, unpackaged weight (kg)	425 kg	465 kg	560 kg	640 kg	720 kg
Regulatory					
Safety	IEC/EN 62040-1				
EMC	IEC/EN 62040-2				
Performance	IEC/EN 62040-3				
Marking	CE				
Battery type					
Battery type	VRLA				
Number of batteries	36 - 50				
Charging power in % of output power (selectable)	26%			24%	
Environmental					
Relative humidity	0 to 95% non-condensing				
Operating elevation	0 to 1500 m without derating				
Audible noise at 1m from unit	70db			72db	
Protection class	IP20				

Nishant Power Solutions Pvt. Ltd.

55-54 4B, High Street Corporate Centre,
Kapurbawadi, Thane (W) MS India 400601
Tel : +91 22 25404025 / Cell 9820843000
Email : sales@upsbatteries.co.in Visit at : www.upsbatteries.co.in

